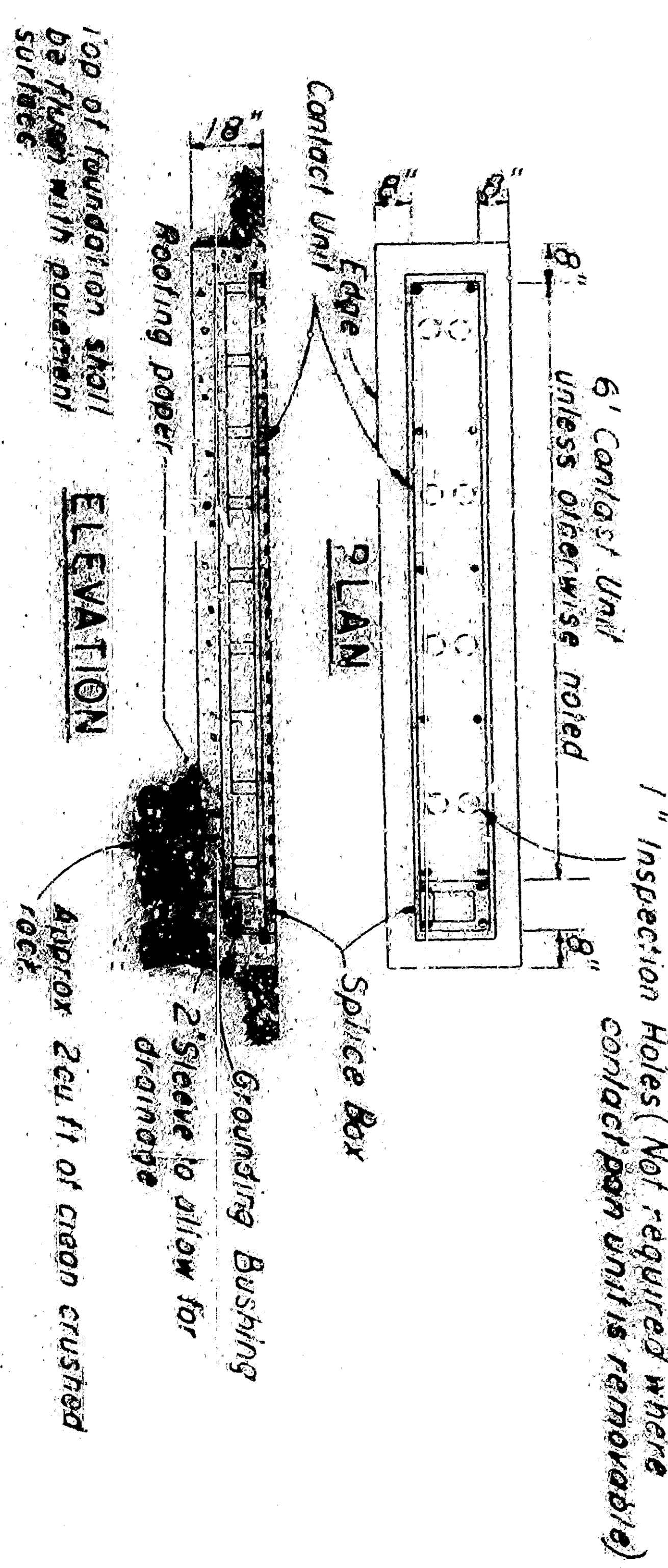
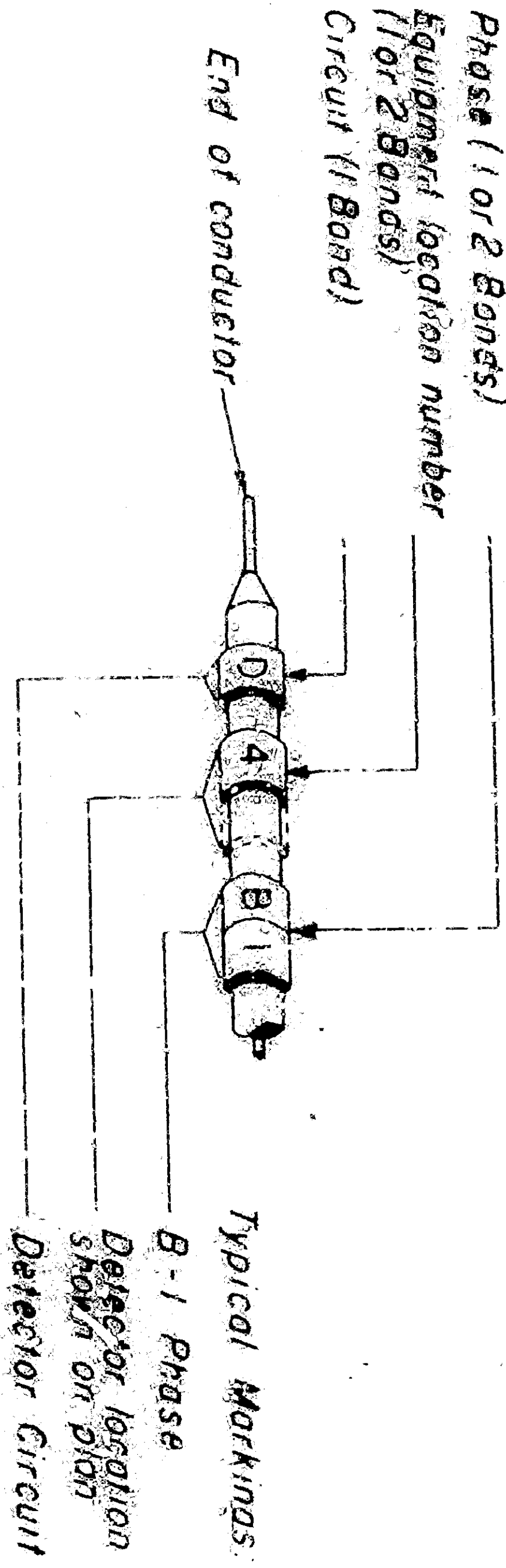


SYMBOLS

PROPOSED	EXISTING
	Signal conduit
	Existing signal conduit
	Pull box
	Non-directional magnetic detector
	Directional pressure detector
	Controller
	Traffic signal, each arrow one-way three color
	Traffic signal, one-way three-color with backboard
	Traffic signal, one-way three-color with backboard with green arrow
	Traffic signal, one-way three-color with backboard with red arrow
	Traffic signal, one-way three-color with backboard with red arrow
	Redaction signal, 2-color head
	Mass arm traffic signal with horizontal type II standard
	Electrolite, most arm type with most arm traffic signal with detachable Type III standard
	Electrolite, upright type
	Redaction push button or post
	Power pole
	Telephone pole
	Fire hydrant
	Flashing beacon, one-way
	Traffic signal with all colors lowered
	Overhead conductor
	Pull box marker

TYPICAL BANDING OF CONDUCTOR ENDS
NO SCALE



PRESSURE DETECTOR
NO SCALE

INSTALLATION NOTES

- CONDUIT**
1. Conduits shall be installed in accordance with the applicable code and shall be installed in a trench or vault.
 2. Conduits shall be installed in a trench or vault and shall be installed in a trench or vault.
 3. Conduits shall be installed in a trench or vault and shall be installed in a trench or vault.
 4. Existing underground conduits to be incorporated into new systems shall be identified with a marker and shall be installed in a trench or vault.
 5. Conduits terminating in standards and pedestals shall extend 2" above finished top of foundation and shall slope toward the hardware.
 6. Service risers shall be terminated with a service head or shall be sealed to prevent the entrance of water as approved by the serving utility.
- PULL BOXES**
1. Pull boxes shall be installed in the vicinity of curbs, shall be placed adjacent to back of curb, except when in conflict with existing facilities.
 2. Top of pull boxes shall be flush with top of curb or sidewalk grade or 1" above surrounding ground when no finished grade is established.
 3. Pull boxes shall be installed in a trench or vault and shall be installed in a trench or vault.
- CONDUCTORS AND WIRING**
1. Signal neutral shall be a separate #10 AWG conductor.
 2. Conductors between ballasts or transformers and luminaires shall be #14 AWG EGC wire.
 3. Conductors between ballasts or transformers and sign switch shall be #14 AWG, EGC wire.
 4. Number of conductors indicated in signal system conduit includes 3 #14 AWG spurs.
 5. Conductors shall be identified with bands.
 6. Underground conductors to signals shall be run without splice, except that splices shall be made in pull boxes, and being made, signal conductors may be spliced where indicated.
 7. Neutral conductors may be spliced in pull boxes.
 8. Two feet of slack shall be provided in each conductor in each pull box.
 9. A separate conductor shall be provided for each detector or pedestrian push button to control the detector.
 10. Color coding for wiring to pedestrian signals shall be as specified for corresponding vehicular green and red indications.
- FOUNDATIONS**
1. Top of foundations for standards shall be level with top of curb in cases of trees or grades above surrounding grade in other areas.
 2. Except as indicated, standards shall be installed with 2 feet clearance to face of curb, edge of shoulder, back of dikes, and back of ditches.
- ELECTROLITES**
1. A minimum vapor leak rating shall be installed in a pull box adjacent to each electrolite, except as indicated.
- SIGNAL EQUIPMENT**
1. Pressure detectors shall be 5 feet long, non-directional, unless otherwise indicated.
 2. Detector position dimensions refer to contact unit.
 3. Top of detector foundation shall be flush and true with pavement surface.
 4. Detector contact unit surface shall be level with top of frame or no more than 1/8" high.
 5. Vehicular and pedestrian signal mountings shall be installed so as to provide maximum horizontal clearance to adjacent roadway.

REDEVELOPMENT AGENCY OF THE CITY OF SAN BERNARDINO	CITY OF SAN BERNARDINO
MEADOWBROOK PROJECT AREA NO. 1 CALIF RD	
ACCEPTED BY: <i>DC K...T</i>	APPROVED BY: <i>...</i>
DESIGNED BY: <i>...</i>	CHECKED BY: <i>...</i>
DRAWN BY: <i>...</i>	DRAWING NO: 2833
SHEET 2	SHEETS

GENERAL DETAILS
TRAFFIC SIGNAL AND HIGHWAY LIGHTING INSTALLATIONS

CODE 02840